



Contents:

Inventory and Analysis:

General Park Description

Lion's Park 1A
Lion's Park 1B
Benny Gordon Park
Potonac Park
Riceville Neighborhood Park

Program Development:

Outline of Program Elements and Locations

Conceptual Design:

Design and Visualizations

Lion's Park 1A
Lion's Park 1B
Benny Gordon Park
Pontotoc Park
Riceville Neighborhood Park

Team:

Kenney M. Etherton

Executive Director
Fulton County Transit

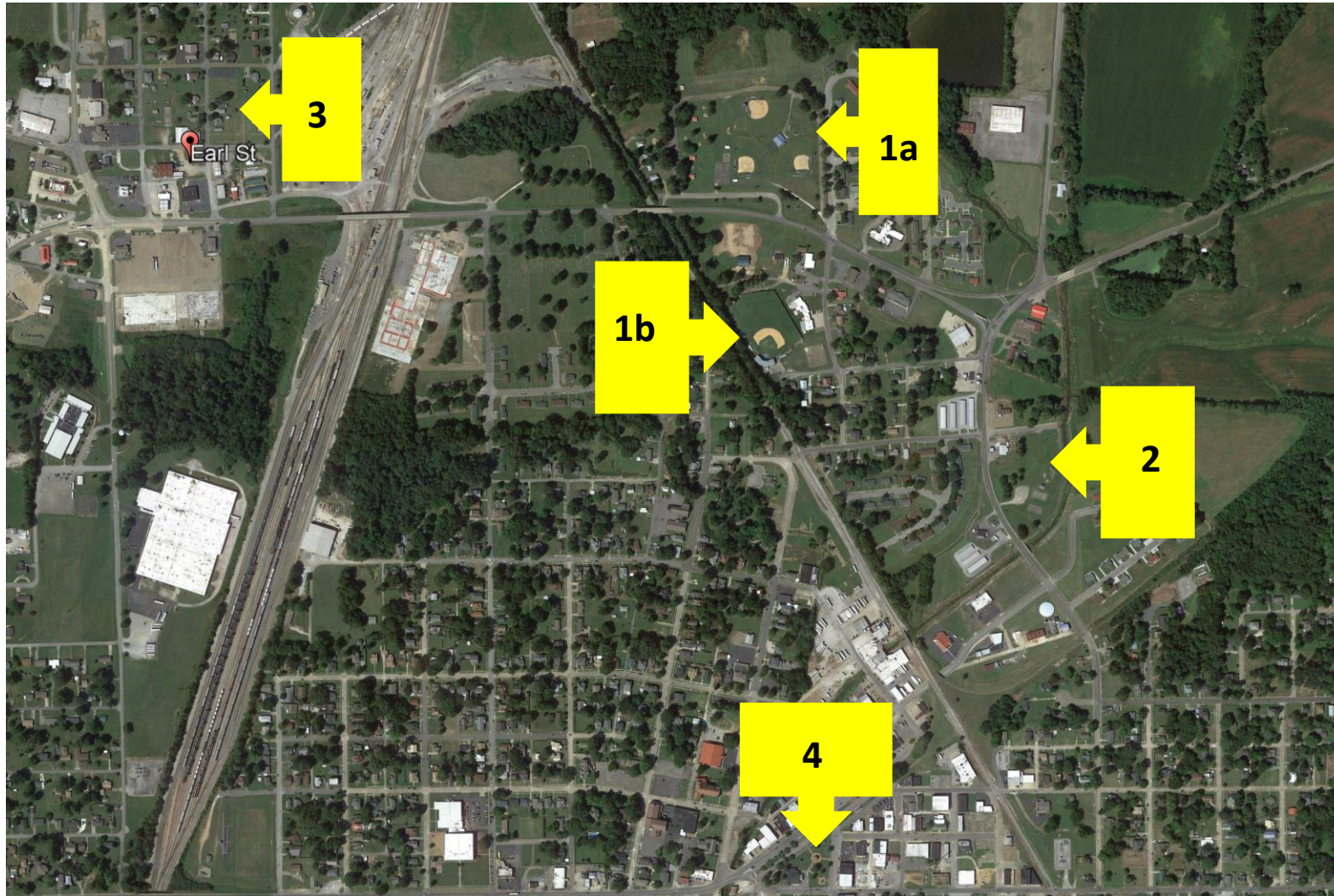
Mike Gunn

Fulton City Manager

The City of Fulton Parks Board

Kim Jobe
Sam Dluzniewski
Teresa, Johnson
Ashley Grissom
Anna McCoy
Jayden Padilla

Mark C. Arnold, RLA
Project Landscape Architect



Purpose:

The Master Plan for the City of Fulton Parks involved the evaluation of five (5) park sites within the city boundary. These included Lions City Park – Lewis Weeks Memorial Park along Highland Drive and the Baseball Park along Browder Street (Sites 1a and 1b) Benny Gordon Memorial Park along Kentucky Avenue, the Riceville Neighborhood Park and Pontotoc Park in downtown. Each park serves slightly different functions for various groups in the community. City Park is primarily a recreational area with baseball, softball, play structures, and picnic shelters. Benny Gordon Park offers basketball courts, open field play and a small picnic shelter and play structure, Riceville neighborhood park offers play equipment for various age groups and Pontotoc Park downtown serves as gathering point for downtown events.

Goals:

To preserve and enhance existing parks within the City while responding to current outdoor recreation trends in a sustainable and fiscally responsible manner.

To develop a Long-Range Vision for Park Improvements and to provide the Parks Board with a roadmap for phased park improvements.



Lion's City Park - Site 1A - Lewis Weeks Memorial Park

This is the largest of the park sites in the community. The general assessment is that the park is well located and highly used. The baseball and softball fields are maintained in good condition with healthy stands of grass, skinned infields and generally positive drainage. The above grade improvements such as fences, bleachers dugouts, batter boxes and lighting are generally in good shape.

Asphalt court surfaces are in disrepair and essentially not useable in the current condition.

Much of the play equipment needs repair or replacement due primarily to age. Park Shelters are use often but need repair or replacement.

The northern Picnic Shelter and Fireplace is in good shape and is heavily used.

The only parking available is On-Street parallel parking along the loop drive.



Lion's City Park - Site 1A

A discussion of Park Needs by the City of Fulton Parks Board took place in August 2018. The following items were noted by the board pertaining to Lions City Park

- Consider a fence near the parking area to protect from dogs.
- Consider turning the bathrooms into a single use stall and refinish the inside including lighting.
- Consider repair or replacing the benches and picnic tables.
- Consider consolidating play areas due to scattered placement.
- Consider a Miniature Golf Course.

Meeting Attendees:

Kenny Etherton, Kim Jobe, Sam Dluzniewski, Teresa, Johnson, Ashley Grissom, Anna McCoy, Jayden Padilla

Other considerations expressed:

Provide additional parking along "loop road." Consider pull in parking to increase availability.



Opportunities:

- Provide additional parking along Loop Drive.
- Condense scattered play equipment into one larger play zone with multi age opportunities.
- Resurface existing asphalt for Sport Court activities. (Volleyball, Basketball, Pickleball)
- Improve or Replace Park Shelters.
- Renovate or Replace Concession and Restroom Facility.
- Provide Property Line Fence adjacent to existing Residential Properties.
- Provide Trail Signage for connection to Site 1b.
- Consider Miniature Golf and Splash Pad.



Lion's City Park Site 1B

Lions City Park is separated by the embankment of Highland Drive at the bridge crossing of the adjacent railroad line. An underpass exists along Browder Court to allow for pedestrian movement below Highland Drive which connects to the two halves of the park. Site 1b includes a large baseball field with bleachers, surface parking, older tennis courts which are no longer in use and RV hookups along Bowder Court.

The large wooden bleachers used for baseball need renovation and repairs but are well used during baseball season.

The Park Board did not outline specific improvements for this site however potential improvements may include:

- Convert existing asphalt pad into parking area for gameday functions.
- Consider use for Open Area adjacent to Highland Drive
- Improve trail and connection with signage.
- Consider Park Shelters and Picnic Areas



Lions City Park Site 1b

Lions City Park is separated by the embankment of Highland Drive at the bridge crossing of the adjacent railroad line. An underpass exists along Browder Court to allow for pedestrian movement below Highland Drive which connects to the two halves of the park. Site 1b includes a large baseball field with bleachers, surface parking, older tennis courts which are no longer in use and RV hookups along Bowder Court.

The large wooden bleachers used for baseball need renovation and repairs but are well used during baseball season.

Opportunities:

The Park Board did not outline specific improvements for this site however potential improvements may include:

- Convert existing asphalt pad into parking area for gameday functions.
- Consider use for Open Area adjacent to Highland Drive
- Improve trail and connection with signage.
- Consider Park Shelters and Picnic Areas



Existing facilities are separated from the main park by the Highland Drive embankment and are tucked in behind other City Buildings making them hard to access and difficult to see. The Grandstand is large enough to accommodate current game day functions but lacks a "Sports" feel due to the dark red wood cladding and generally poor visibility. Long range consideration should be given to opening up the exterior of the stands and providing more color.

The abandoned asphalt area adjacent should be resurfaced and restriped for parking.





Benny Gordon Park

The park serves primarily as a neighborhood park for the adjacent Clifton Circle and Friendship Drive families. The park is bordered by Kentucky Avenue Highway 307, Reed Street and a blueline stream which serves as the back boundary. The park contains two basketball courts, a picnic shelter and some scattered play equipment. The basketball courts currently need resurfacing and striping, the shelter is in reasonably good condition.

Play equipment includes scattered climbing structures and swings.

The Fulton Park Board noted the following considerations at their meeting in August 2018.

- Consider adding fall zone protection for play equipment.
- Consideration for replacing Swings (code considerations).
- Insect problems at the Picnic Shelter.
- Consideration for a walking path or looped Par Course.
- Resurfacing and Restriping Basketball Courts.



Other Considerations:

- The existing gravel parking area is not well defined and could be re-aligned for functional and efficient parking.
- The open space is generally level and would work well for open field sports, miniature golf, youth soccer, lacrosse or football. This would be half sized as the maximum dimension for the area would not meet full size standards.
- Consideration should be given to a pedestrian bridge crossing to the adjacent neighborhood and extension of a park loop trail.
- Play equipment should be consolidated into a multi-age play area with appropriate safety zones and surfacing.
- Provide benches, trash receptacles and appropriate site furnishings at the basketball courts, shelter, play area and along walking trails or Parcourse.



Existing Climbers and Slide can be relocated into a concise play area with appropriate fencing, fall zones and surfacing.

Consideration should be given to expanding the paved surface around the existing shelter and providing paved connections back to basketball courts, parking areas and to a loop trail or parcours.



Additional seating, signage, landscaping would improve the visual quality of the park.





Riceville Neighborhood Park

The small park in the Riceville Neighborhood serves about forty (40) homes within a five-block area of Highland Drive. The park includes several pieces of older metal frame play equipment including a Metal Climber, Slides, Spinner (Merry Go Round), Swings, Monkey Bars and a slightly newer play structure for younger children. The park also contains a basketball court and a park shelter.

The equipment in the park is scattered throughout with the Park Shelter at the center and most of the pieces need repair or replacement to meet current play standards.

At their August 2018 Meeting, The Fulton Park Board recommended improvements to the lighting, general cosmetic improvements and new or renovated benches.



Aerial images of the park show the placement of the play equipment throughout the space with the shelter in the center.

Considerations:

- Resurfacing of Basketball Court.
- Additional Walkways.
- Consolidate Play Equipment Areas.
- Consider New Playground Zone with Appropriate Safety Zones and Surface Materials.
- Consider walkways to Key Areas.
- New Lighting and Signage.
- Consider New Landscaping in order to provide, shade, seasonal color, softening and screening.



Existing Climbers and Slide can be relocated into a concise play area with appropriate fencing, fall zones and surfacing.

Equipment should be carefully checked for metal fatigue and rust. If existing equipment is kept, fall zone surfaces should be developed and equipment should be painted with non-lead-based paint.





Pontotoc Park:

Pontotoc Park serves as the primary downtown gathering area within the City of Fulton. Outdoor events and gatherings are the primary function and the park further offers a lovely bandstand pavilion and a recently developed Veterans Memorial at the intersection of Commercial Avenue and Walnut Street.

The site is well located in the heart of the city and offers wonderful potential as it is adjacent to the abandoned railway right of way which serves as a parking area for visitors to the park and local shops.

At the August 2018 Meeting of the City of Fulton Parks Board adding a public restroom was discussed as well as a possible splash pad.



Pontotoc Park:

Pontotoc Park serves as the primary downtown gathering area within the City of Fulton. Outdoor events and gatherings are the primary function and the park further offers a lovely bandstand pavilion and a recently developed Veterans Memorial at the intersection of Commercial Avenue and Walnut Street.

The site is well located in the heart of the city and offers wonderful potential as it is adjacent to the abandoned railway right of way which serves as a parking area for visitors to the park and local shops.

Completing the triangular open space is the Pontotoc Community Center Facility. Along the edge of the facility a bandstand and bleachers have been added for outdoor concerts and shows.

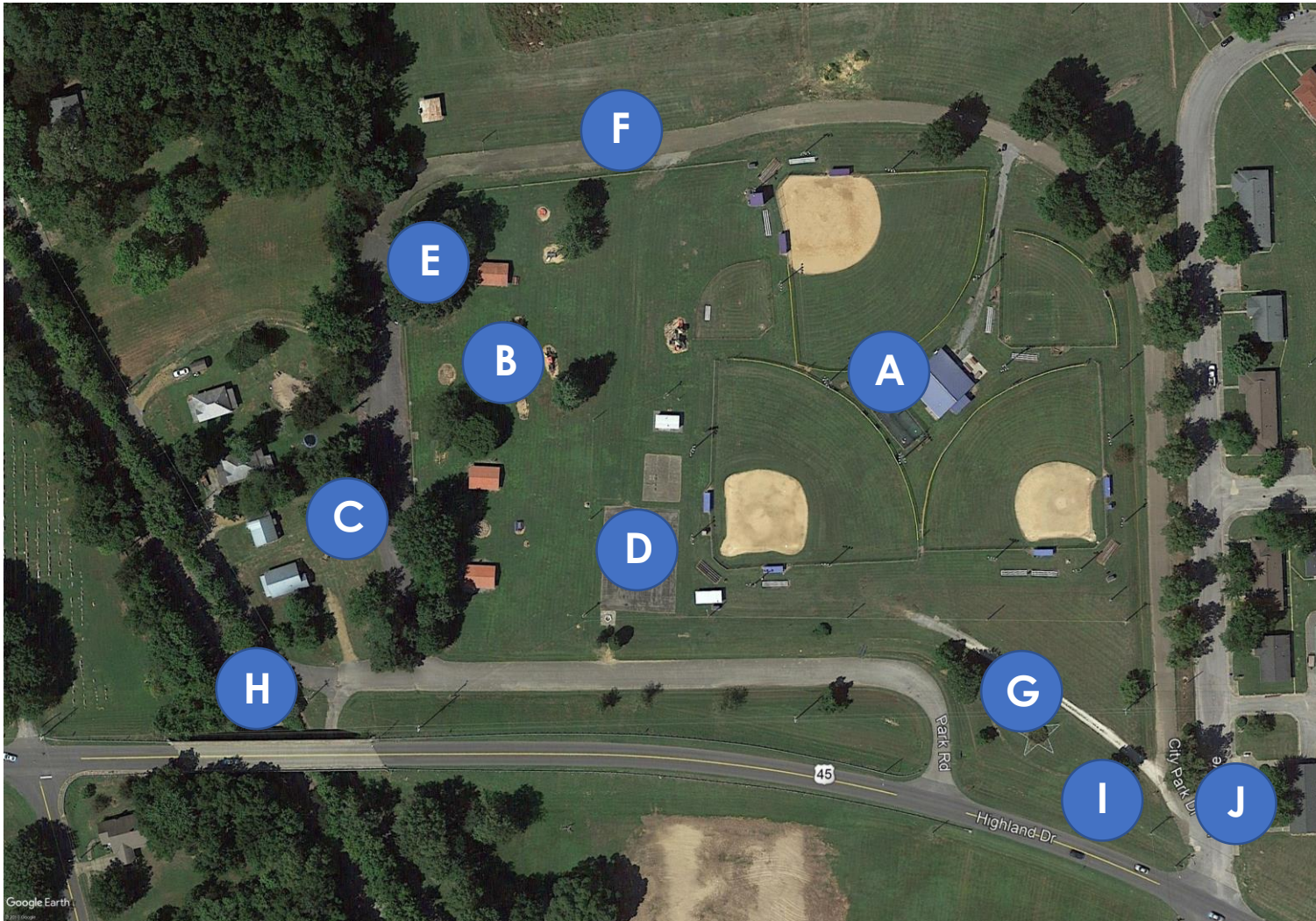
At the August 2018 Meeting of the City of Fulton Parks Board adding a public restroom was discussed as well as a possible splash pad.



Pontotoc Park is well maintained and offers lovely amenities. The lovely pavilion is surrounded by landscaping and brick pavers and site shelters and benches match the architectural style of the park. Light Fixtures along the perimeter of the park match the City Standard.

Considerations:

- Consider incorporating the Railroad ROW into an overall streetscape and park plan. Expand the pedestrian reach of the park along Lake Street. This area offers an excellent opportunity and set-up space for downtown fairs and exhibits.
- Provide additional landscape features and outdoor sculpture around the pavilion and grounds to attract visitors. Consider development of landscape beds with seasonal color and interest.
- Consider Banner Arms and other elements to attract visitors and encourage stops.
- Develop more visible Pedestrian Cross-walks to Adjacent Business Areas along Lake Street and Main Street.
- Provide Restroom Facility attached to Community Center Facility.
- Expand Stage Area seating and improve the stage area plaza



Lions City Park – Site 1A

- A. Renovate Restrooms.
- B. Consolidate Play Equipment – New Play Structure and Safety Zone.
- C. Provide Perimeter Fence at Residential Property.
- D. Convert Asphalt Area to Pickleball Courts.
- E. Provide New Shelters.
- F. Develop Pull – In Parking along Loop Drive.
- G. Re-Align Loop Circulation – Connection back to City Park Drive.
- H. Improve Wayfinding to Highland Drive Underpass.
- I. Provide Better Park Entrance Signs.
- J. Clarify Connection at City Park Drive and Vernon Avenue.



Lions City Park – Site 1b

- A. Renovate Grandstands for more Color and Visibility
- B. Convert Asphalt Area to Parking Lot.
- C. Discuss Field Sport or Tennis Courts at Open Space along Highland Drive.
- D. Provide New Signage at Browder Street and Theford Street Intersection.
- E. Improve – Expand RV Campground Area
- F. Improve Wayfinding and Access at Underpass



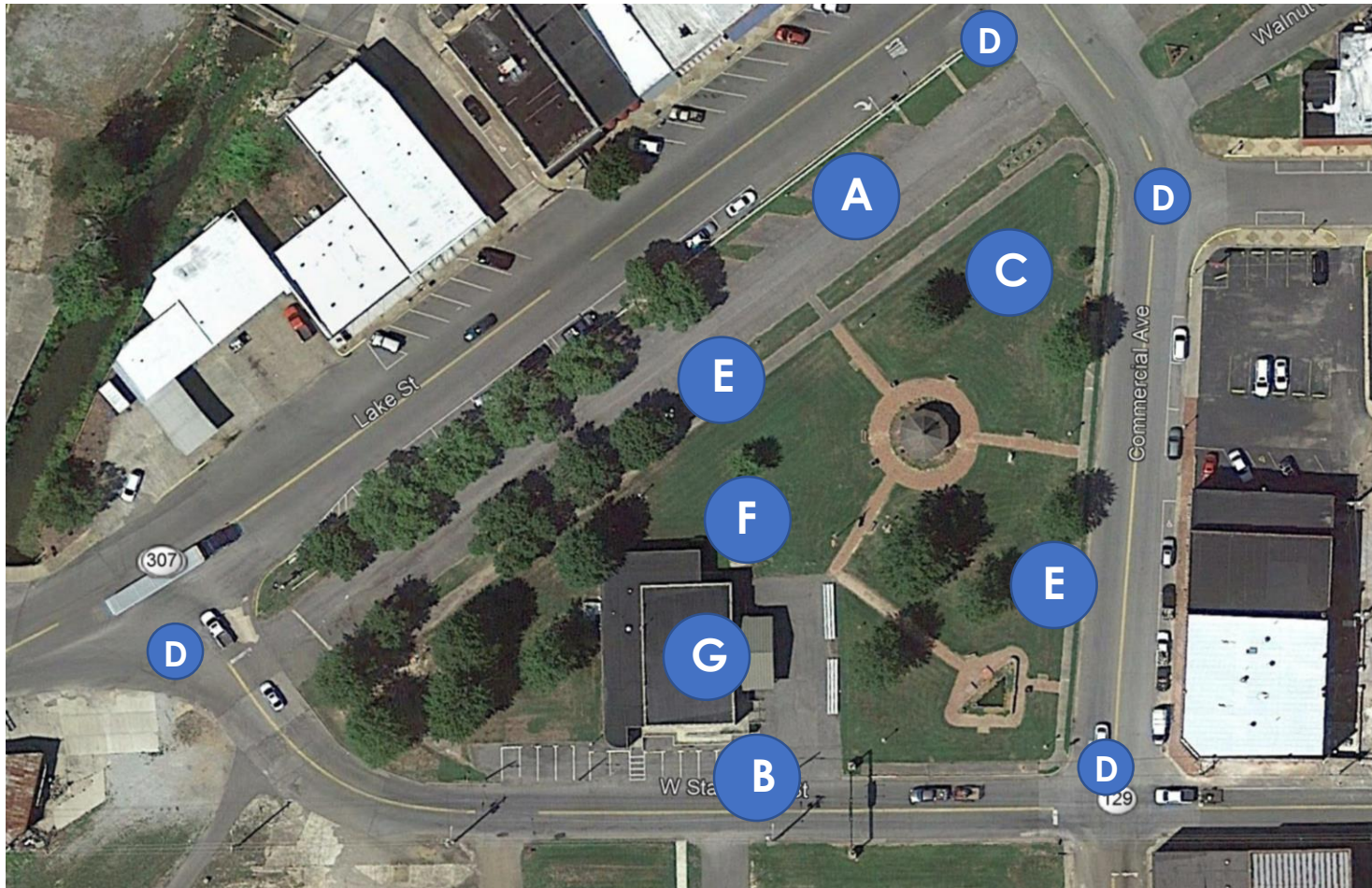
Benny Gordon Park

- A. Improve Parking Area – Resurface and Striping.
- B. Consolidate Play Equipment – New Play Structure and Safety Zone.
- C. Provide Loop “Parcourse” Walking Trail.
- D. Connect Trail To Residential Neighborhood Provide Pedestrian Bridge.
- E. Expand Pavement @ Shelter.
- F. Resurface Basketball Courts.
- G. Consider Mini-Field or Miniature Golf Course in Open Area.
- H. Improve Wayfinding and Signage
- I. Provide Better Park Entrance Signs.



Riceville Neighborhood Park

- A. Consolidate Play Equipment – New Play Structure and Safety Zone.
- B. Expand Pavement @ Shelter.
- C. Resurface Basketball Courts.
- D. Improve Wayfinding and Signage.



Pontotoc Park

- A. Develop Long Range Master Plan for Railroad ROW and Parking Area.
- B. Improve Parking and Surface at Bandstand Area.
- C. Improve Landscaping and Consider Outdoor Sculpture.
- D. Improve Crosswalk Connections.
- E. Consider Banner Arms on Existing Light Poles.
- F. Consider Restrooms.
- G. Expand Stage Seating and Improve Plaza.



Plan View of Site 1A.



Lion's City Park Site 1A Program

- Provide additional parking along Loop Drive.
- Condense scattered play equipment into one larger play zone with multi age opportunities.
- Resurface existing asphalt for Sport Court activities. (Volleyball, Basketball, Pickleball)
- Improve or Replace Park Shelters.
- Renovate or Replace Concession and Restroom Facility.
- Provide Property Line Fence adjacent to existing Residential Properties.
- Provide Trail Signage for connection to Site 1b.



Plan View of Playground and Picnic Area.



View of Toddler Play Area.



View of Plaza and New Restrooms.



Birdseye View.



View of Toddler Play Area



View of Youth Play Area.



Birdseye View.



Combined Play Areas with Central Plaza.



View of Splash Pad Play Area.



View of Toddler Play Area.



Perimeter Loop Drive with Additional Parallel Parking at Ball Field Area.



Rear Gate and Perimeter Fence.



Typical Park Gateway Entrance Wall.



Play Area Drop Off.



Birdseye View of Combined Park Areas.



Lions City Park Site 1B Program

- Renovate Grandstands for more Color and Visibility.
- Convert Asphalt Area to Parking Lot.
- Provide New Signage.
- Expand RV Campground Area.
- Improve Wayfinding and Access at Underpass.
- Improve Plaza Area at Grandstands.
- Add Restroom and Parking.
- Add Walking Trails.

Plan View of Site 1B.



Plan View of Site 1B.



Birdseye View Over Miniature Golf Course.



Birdseye View of Expanded Camping and RV Area.



Birdseye View of Expanded Camping and RV Area.



Ground Level View of Camping Area.



Birdseye View Parking and Stadium Area.



Birdseye View Parking and Stadium Area.



Perspective View of Stadium Drop Off Area.



Plan View.



Benny Gordon Park Program

- Improve Parking.
- Resurface Basketball and Provide New Lighting.
- Enhance Shelter Area.
- Provide Seating and Gathering Areas.
- Provide Loop Walking Path with Parcourse and Nature Walk.
- Develop Pedestrian Bridge to Neighborhood.
- Develop Stream Edge and Landscaping.



Birdseye View.



Birdseye View.



Birdseye View.



Birdseye View.



Picnic Shelter Area.



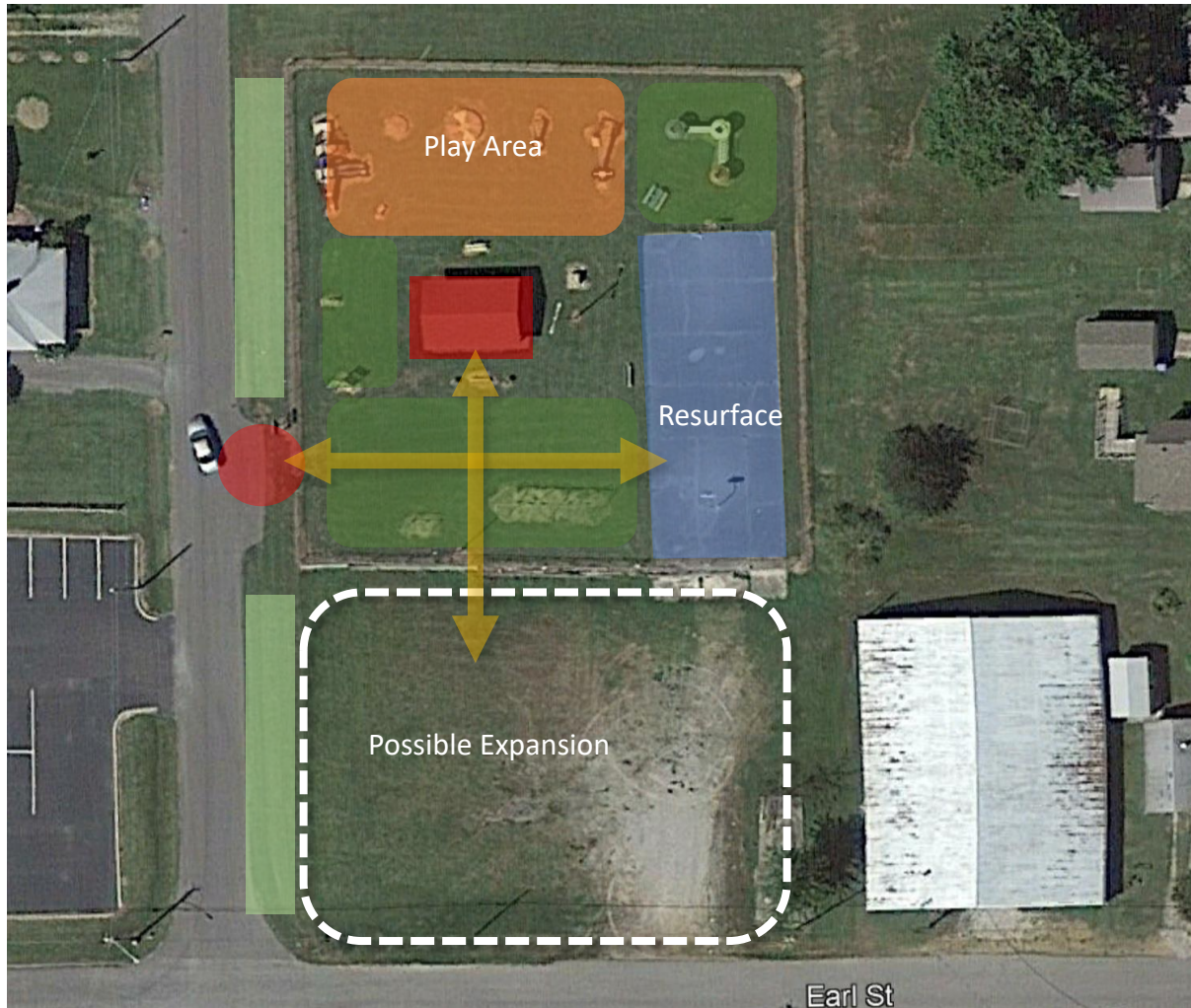
Basketball Court and Shelter.



Par Course Loop Trail.








Multi-Age Play Area.



Plan View.

Recommendations:

-  Develop New Play Area with appropriate safety zones and surface materials.
-  Resurface Court. Consider Limited Cut Off Lighting.
-  Develop New Plaza and Park Shelter Area
-  Preserve Open Space and Lawn Areas.
-  Enhance Perimeter Landscaping with Shade Trees. Consider sidewalks along edge of Park.
-  Improve Entrance Signage and Gateway.
-  Develop permanent walkways connecting park areas. Basketball – Pavilion and Play Area



Plan View.



Riceville Neighborhood Park

- Consolidate Play Equipment – New Play Structure and Safety Zone.
- Expand Pavement @ Shelter.
- Resurface Basketball Courts.
- Improve Wayfinding and Signage.
- Consider Purchase of Additional Property
- Provide Additional Basketball Court and Pavilion.
- Consider Horse Shoe / Bocce Ball Courts



Birdseye View of Park Area and Expansion Area.



Birdseye View.



Play Area and Picnic Shelter.



Play Area and Picnic Shelter.



Restroom Area .



Park Entrance Gateway.

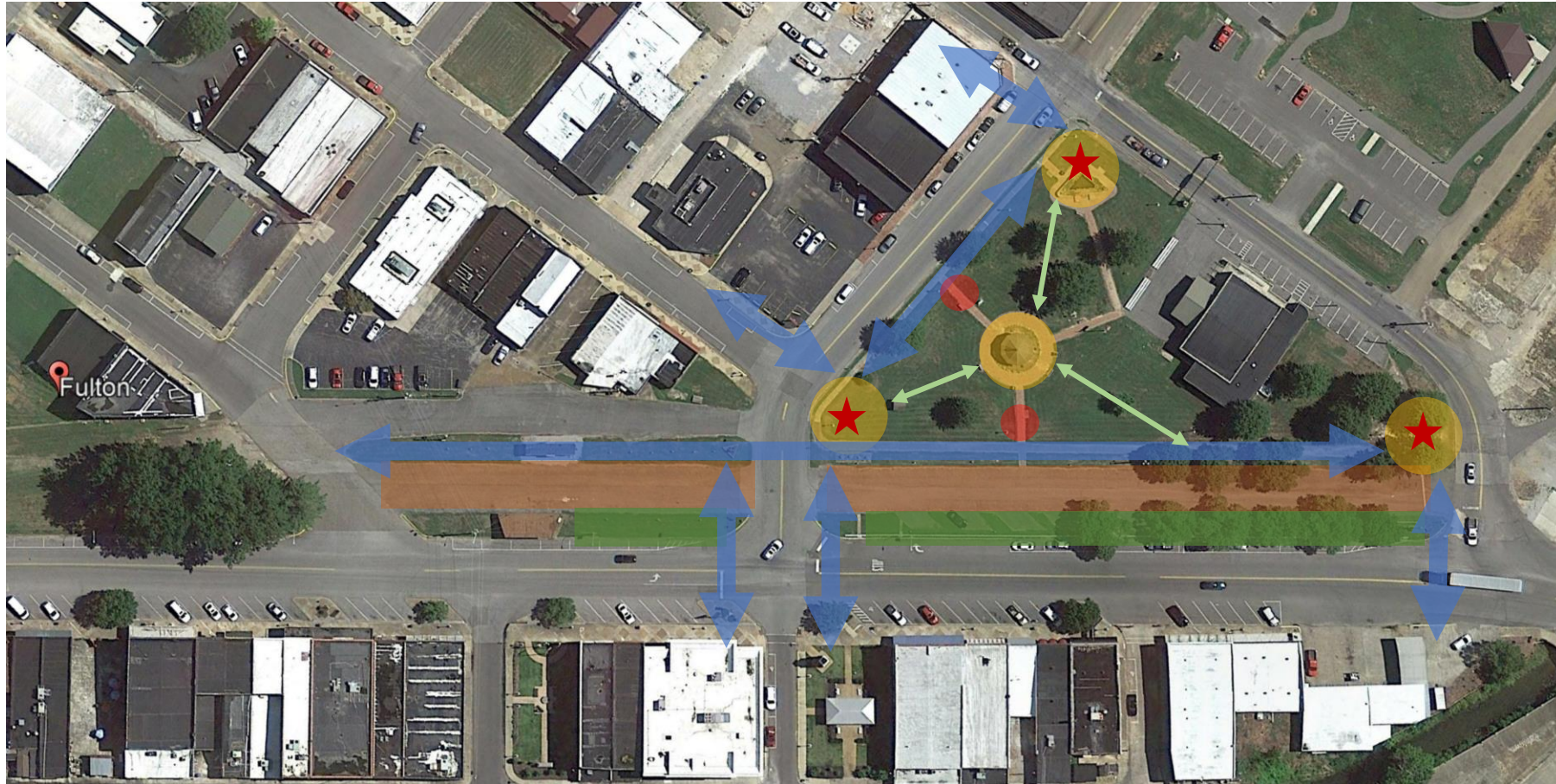


Play Area and Picnic Shelter.








Birdseye View

Riceville Neighborhood Park



Recommendations:

-  Create Larger Gateway Areas at Signature Park Corners. Include
-  Provide Signature Sculpture or Water Feature
-  Consider Long Range Plan for Connection to the Pavilion. Develop Linear Park Concept.
-  Enhance Walkways and Crossings
-  Provide Garden Paths with Landscaped Seating Areas throughout the Park.
-  Improve Existing Access and Walk Connections with special pavement.

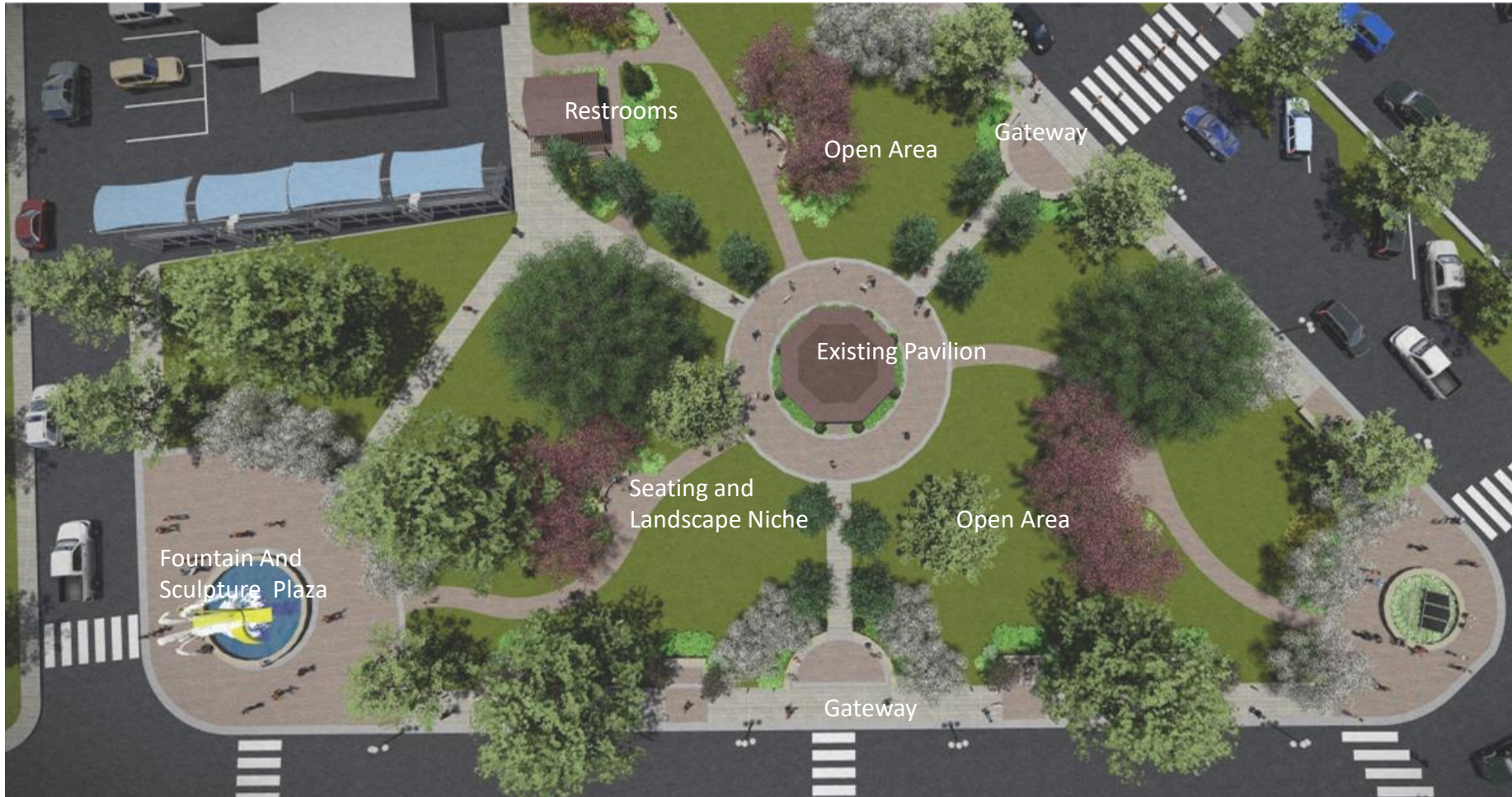
Functional Diagram for Park Improvements.



Pontotoc Park

- Develop Long Range Master Plan for Railroad ROW and Parking Area.
- Improve Parking and Surface at Bandstand Area.
- Improve Landscaping and Consider Outdoor Sculpture at Intersections
- Improve Crosswalk Connections.
- Consider Banner Arms on Existing Light Poles.
- Consider Restrooms.
- Expand Stage Seating and Improve Plaza.
- Create Seating Areas and Landscape Focal Areas

Overall Plan View.



Plan View along Commercial Avenue





Birdseye View from Lake Street.





Birdseye View Over Commercial Avenue.



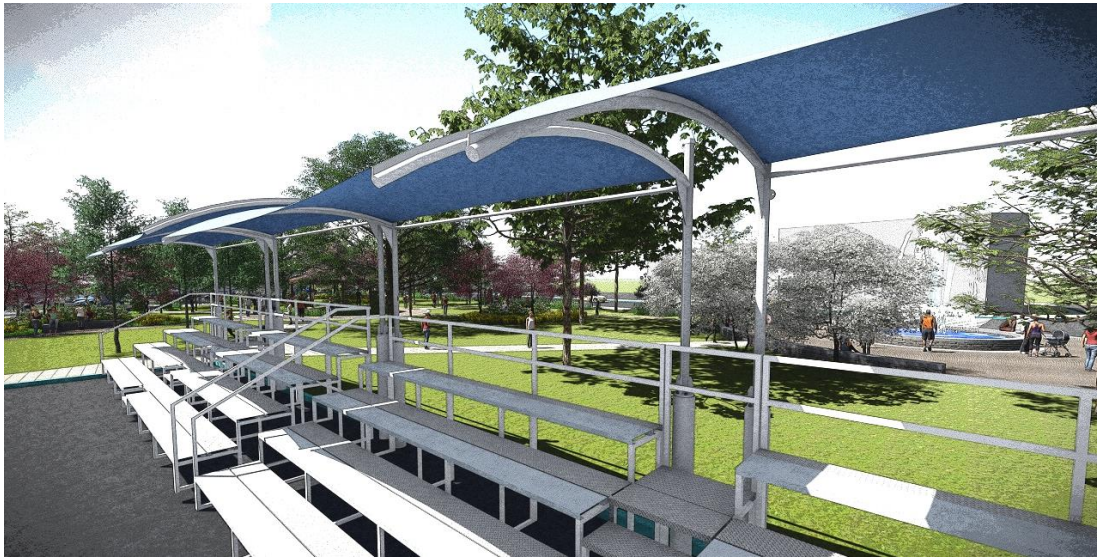
Gateway Entrance.



Streetscape



Fountain Plaza with Abstract Sculpture – (Banana History Theme)



Improved Bleachers.



Fountain Plaza.



Sculpture Plaza (Native American Theme).



Seating Node along Park Walkway.