



Contact: Shayne Lingg  
Office: 844.668.7477  
Mobile: 931.237.8604

## SIDEWALK TRIP HAZARD REPAIR SUMMARY: PHASE II



Presented to: Cubb Stokes  
January 2017

The information in this summary is confidential, and is to be used only by the intended recipient and Precision Concrete Cutting in evaluating the project. Any copying or unauthorized disclosure of this information is prohibited.



## COMMITMENT SUMMARY

### COST SAVINGS

We'll repair your sidewalks for 50-90% less than sidewalk replacement, meaning you can do more for your city for less.

### A.D.A. COMPLIANCE

Patented technology that brings sidewalks into ADA compliance.

### CLEAN

Our patented containment system captures dust and debris to bring you the cleanest process available.

### SAFE

Decrease liability on your pedestrian walkways.

### DETAILED REPORTING

We track our jobs with honesty and integrity. Invoices show measurements, locations and cost for each hazard.

### LOW IMPACT

Efficient systems with an average removal time of 20 minutes, no sidewalk closures.

### FULL SERVICE CONTRACTOR

Complete GIS integration, mapping, etc.



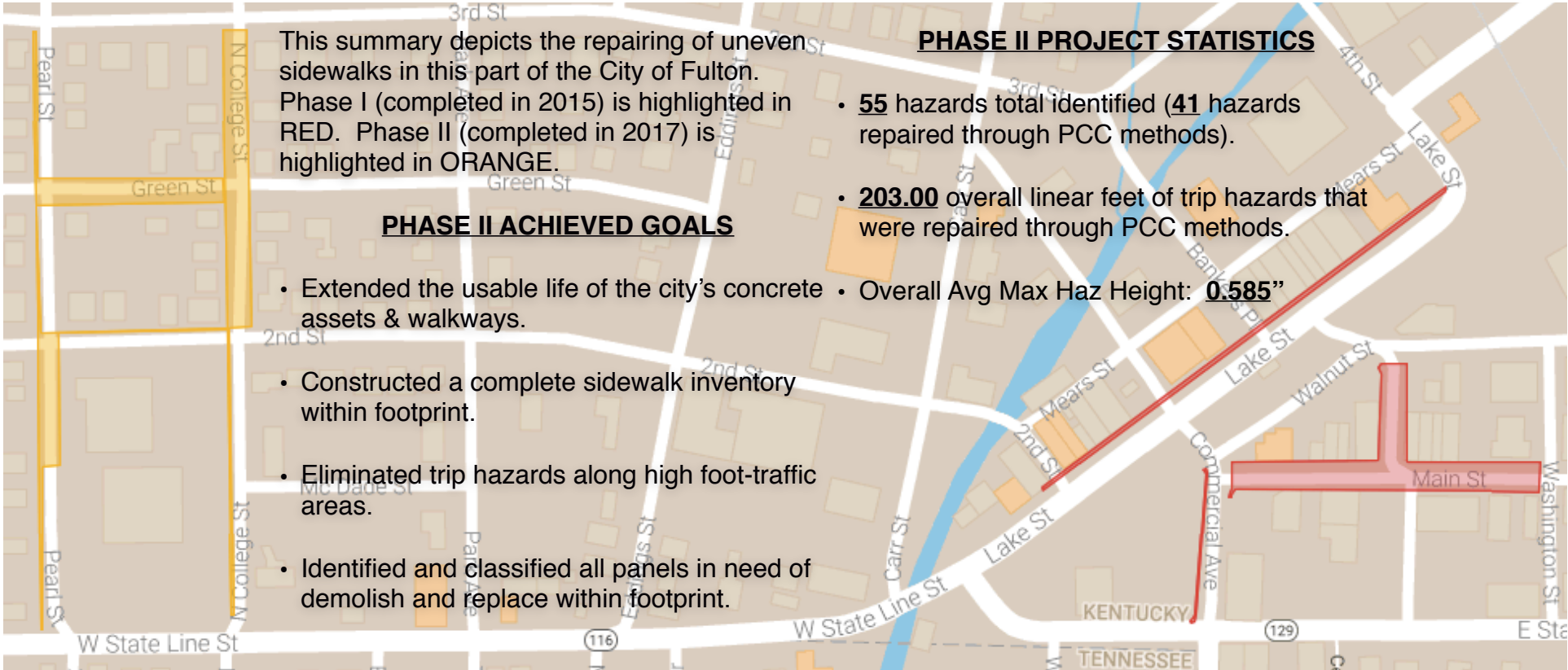
**ENVIRONMENTAL IMPACT EXAMPLE:** As a member of the U.S. Green Building Council (USGBC) we are proud of the fact that we reduce the impact to landfills and the environment as a result of our service.

Removing and replacing 100 panels would result in approximately 118,500 pounds or 59 tons of concrete being removed (average panel weight of 1185 pounds).

Using Precision Concrete Cutting for 100 trip hazards results in 0.3 tons of concrete removed and recycled, approximately 141 gallons of gasoline saved, and a reduction of 1.3 metric tons of Co<sub>2</sub>.

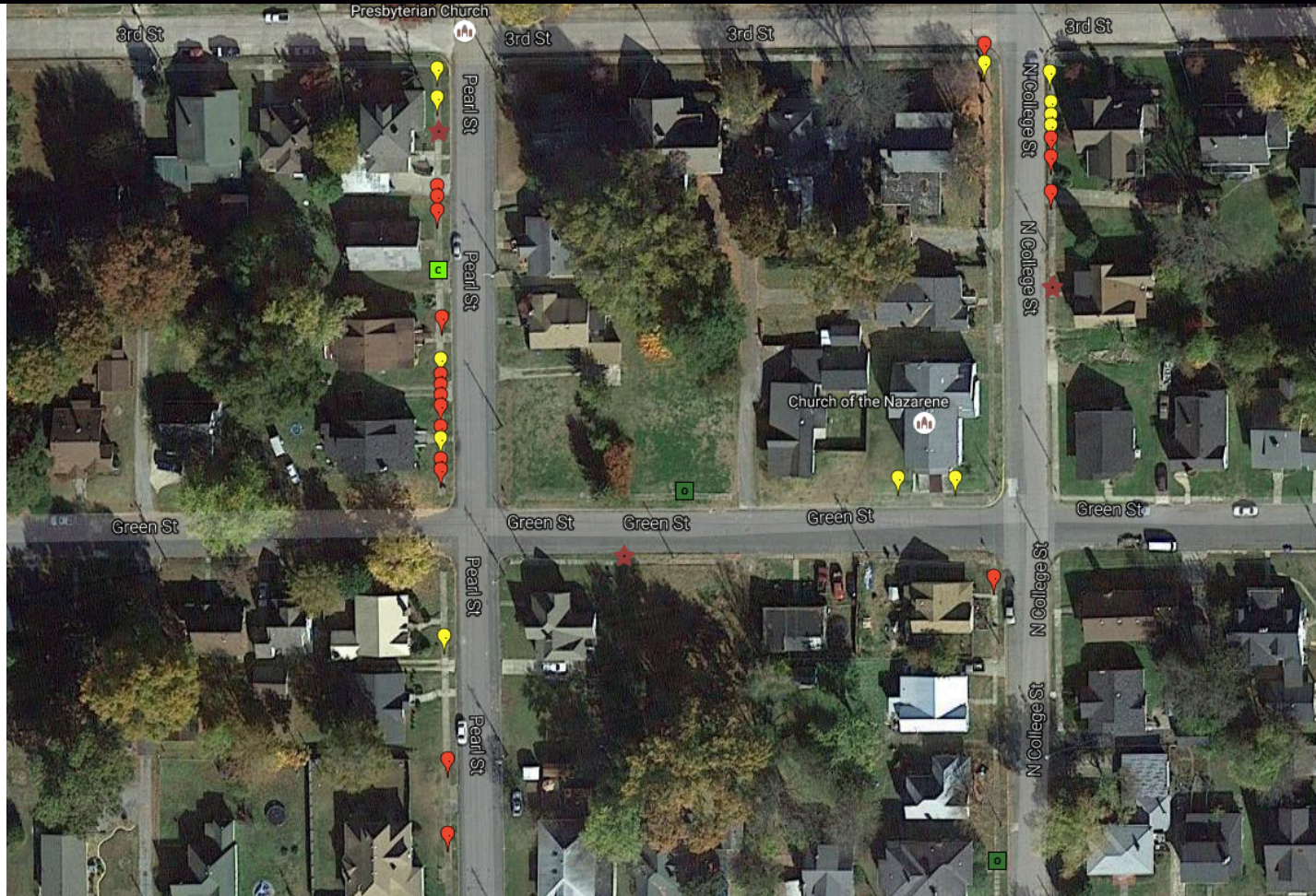



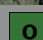



# OVERALL PHASE II PROJECT FOOTPRINT



The map in this summary shows the project footprint for trip hazard repair in the city of Fulton, KY. The area has been surveyed for trip hazards for audit and trends. The accuracy of these maps is dependent on smart phone technology available, and should be relied upon as approximations.

# PEARL ST / N COLLEGE ST / GREEN ST



	<b>C</b> : Cracking	<b>M</b> : Missing	 : Overgrown	 : 1/4" to 3/8"	The map in this project summary shows the resolution area for trip hazards in this part of the city. The area has been surveyed for trip hazards for audit and trends. The accuracy of these maps is dependent on smart phone technology available, and should be relied upon as approximations.
	<b>S</b> : Spalling	<b>H</b> : Heaving	 : Multiple	 : 1/2" to 2"	
	<b>U</b> : Utility	<b>T</b> : Tree Damage			



# PEARL ST / N COLLEGE ST / 2ND ST



<b>C</b> : Cracking	<b>M</b> : Missing	<b>O</b> : Overgrown	<b>●</b> : 1/4" to 3/8"
<b>S</b> : Spalling	<b>H</b> : Heaving	<b>★</b> : Multiple	<b>●</b> : 1/2" to 2"
<b>U</b> : Utility	<b>T</b> : Tree Damage		

The map in this project summary shows the resolution area for trip hazards in this part of the city. The area has been surveyed for trip hazards for audit and trends. The accuracy of these maps is dependent on smart phone technology available, and should be relied upon as approximations.



## REPAIR / OBSERVATION LIST

No.	Size	Size	Lineal Feet	Location	Inch Feet / Observation
1	0.375	0.000	5.00	501 3rd St (on Pearl St)	0.94
2	0.375	0.375	5.00	501 3rd St (on Pearl St)	1.88
3	0.000	0.000		501 3rd St (on Pearl St) Multi Panel	Cracking, Missing
4	0.500	0.000	5.00	304 Pearl St	1.25
5	0.875	0.000	5.00	304 Pearl St	2.19
6	0.625	0.000	5.00	304 Pearl St	1.56
7	0.000	0.000		304 Pearl St Multi Panel	Cracking
8	0.875	0.375	6.00	302 Pearl St	3.75
9	0.375	0.000	5.00	302 Pearl St	0.94
10	1.000	0.000	5.00	302 Pearl St	2.50
11	1.250	1.250	5.00	300 Pearl St	6.25
12	0.625	0.000	5.00	300 Pearl St	1.56
13	0.875	0.000	5.00	300 Pearl St	2.19
14	0.875	0.000	5.00	300 Pearl St	2.19
15	0.250	0.000	5.00	300 Pearl St	0.63
16	1.625	0.000	5.00	300 Pearl St	4.06
17	0.625	0.000	5.00	300 Pearl St	1.56
18	0.250	0.000	5.00	206 Pearl St	0.63
19	0.500	0.000	5.00	204 Pearl St	1.25
20	0.500	0.500	5.00	204 Pearl St	2.50
21	0.625	0.500	5.00	500 2nd St (on Pearl St)	2.81
22	0.000	0.000		500 2nd St (on Pearl St)	Utility
23	1.000	0.000	5.00	118 Pearl St	2.50
24	0.375	0.250	5.00	116 Pearl St	1.56
25	0.000	0.000		116 Pearl St Multi Panel	Cracking

The information in this summary is confidential, and is to be used only by the intended recipient and Precision Concrete Cutting in evaluating the project. Any copying or unauthorized disclosure of this information is prohibited.



## REPAIR / OBSERVATION LIST

No.	Size	Size	Lineal Feet	Location	Inch Feet / Observation
26	0.375	0.250	5.00	110 Pearl St	1.56
27	0.375	0.250	4.00	110 Pearl St	1.25
28	0.000	0.000		106 Pearl St Multi Panel	Cracking
29	1.125	1.125	4.00	106 Pearl St	4.50
30	0.000	0.000		100 Pearl St	Cracking
31	0.500	0.250	5.00	101 N College St	1.88
32	0.500	0.250	5.00	101 N College St	1.88
33	0.000	0.000		101 N College St	Missing
34	0.000	0.000		101 N College St	Missing, Spalling
35	0.000	0.000		101 N College St Multi Panel	Cracking
36	0.375	0.000	5.00	101 N College St	0.94
37	0.375	0.000	5.00	101 N College St	0.94
38	0.000	0.000		200 N College St Multi Panel	Overgrown
39	0.875	0.000	4.00	206 N College St	2.81
40	0.375	0.000	4.00	401 3rd St (on N College St)	0.75
41	0.750	0.625	4.00	401 3rd St (on N College St)	2.75
42	0.375	0.375	5.00	Across from 401 3rd St (on N College St)	1.88
43	0.250	0.250	5.00	Across from 401 3rd St (on N College St)	1.25
44	0.250	0.000	5.00	Across from 401 3rd St (on N College St)	0.63
45	0.375	0.375	5.00	Across from 401 3rd St (on N College St)	1.88
46	0.625	0.375	5.00	Across from 401 3rd St (on N College St)	2.50
47	0.500	0.000	5.00	Across from 401 3rd St (on N College St)	1.25
48	0.625	0.000	5.00	Across from 401 3rd St (on N College St)	1.56
49	0.000	0.000		309 N College St Multi Panel	Overgrown, Missing
50	0.250	0.000	6.00	404 Green St	0.75

The information in this summary is confidential, and is to be used only by the intended recipient and Precision Concrete Cutting in evaluating the project. Any copying or unauthorized disclosure of this information is prohibited.



## REPAIR / OBSERVATION LIST

No.	Size	Size	Lineal Feet	Location	Inch Feet / Observation
51	0.250	0.000	6.00	404 Green St	0.75
52	0.000	0.000		404 Green St Multi Panel	Overgrown
53	0.000	0.000		205 Pearl St (on Green St) Multi Panel	Cracking, Overgrown, Missing
54	0.000	0.000		408 Second St Multi Panel	Overgrown
55	0.500	0.000	5.00	402 Second St	1.25

The information in this summary is confidential, and is to be used only by the intended recipient and Precision Concrete Cutting in evaluating the project. Any copying or unauthorized disclosure of this information is prohibited.





# PROJECT PARAMETERS / SAVINGS ANALYSIS FOR PROJECT

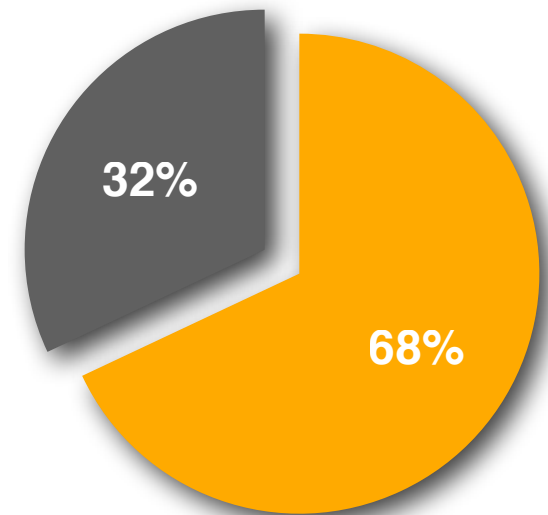
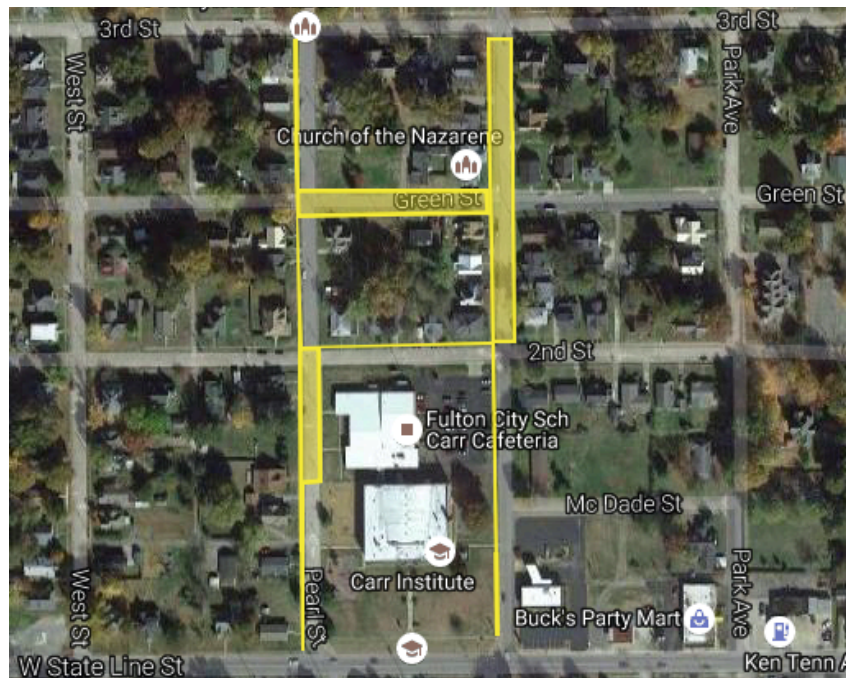
## Option Elected

- 1:12 Ratio Slope
- Complete Clean Up & Recycle
- Dust Abatement System
- Detailed Audit-able Invoice
- All Hazards 1/4" to 2" Repairable by PCC Methods
- **\$15 / Linear Foot**
- 1 Price per Hazard Regardless Severity
- Total Time: 1-day
- **ALL** Pins

**\$3,045.00**

Based off **\$6.50** cost per square foot to remove and replace a sidewalk panel, we estimate the following:

Total cost using Precision Concrete Cutting with **Option Elected** is **\$3,045.00**, an estimated savings of **\$6,549.00**.



● SAVINGS ● PCC Cost

The information in this summary is confidential, and is to be used only by the intended recipient and Precision Concrete Cutting in evaluating the project. Any copying or unauthorized disclosure of this information is prohibited.